

MISC. STEEL TRAILER PARTS



12" x 16" Cylinder Lifting Pad
Used with Challenger single 6" and 8" cylinder
Ground bearing model only
Part No. T-ST-SBOOT



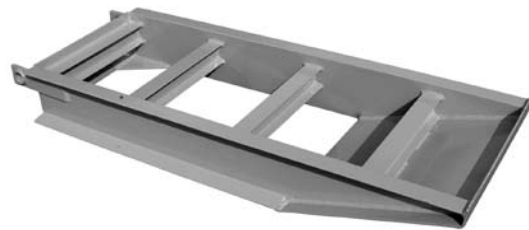
12" x 24" Cylinder Lifting Pad
Used with Challenger twin 6" and 8" cylinder
Ground bearing model only
Part No. T-ST-DBOOT



Stiff Leg Handle and Lock Assembly
17" x 3" flat bar handle with spring loaded lock
Part No. T-ST-STIFFHANDLE



Gooseneck Support Bar
Used to lift gooseneck off truck frame
All necessary mounting hardware included
Part No. T-ST-NECKSUPP



24" x 60" Rear Loading Ramp
Set up for 13 degree trailer rear bridge
All necessary mounting hardware included
Part No. T-ST-SPRRAMP



20" x 24" Folding Front Flip Ramp
8" tall at rear of ramp
All necessary mounting hardware included
Part No. T-ST-8FFRAMP

20" x 24" Folding Front Flip Ramp
6" tall at rear of ramp
All necessary mounting hardware included
Part No. T-ST-6FFRAMP

Lock assembly for TPIST-STIFFHANDLE
Part No. T-ST-B2958



10" x 1.875" cold rolled round bar
Handle installed with 5/16" hole for bridge pin
Part No. T-ST-1875 ROUND

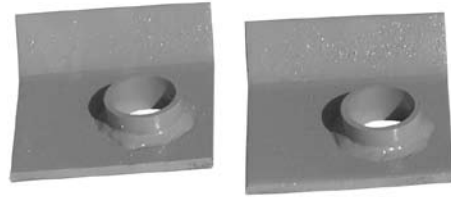
MISC. STEEL TRAILER PARTS



1/2" x 3" x 17" Flat Bar
16" hole center, 1" diameter
 Used with Challenger RG model
 Ground bearing model only
Part No. T-ST-SFTYBAR



1" x 5" "D" Lashing Ring Straight
 With mounting clip
Part No. T-ST-DRING



6" x 5" x 1/2" Plate with
2" Pipe Bushing Installed
Part No. T-ST-GUIDEPLATE



12" Swing Out Bracket
 Mounting hardware separate
Part No. T-ST-ORIGGER



Bottom mounting bracket
 for No. T-ST-ORIGGER
Part No. T-ST-BCLIP



Top mounting bracket
 for No. T-ST-ORIGGER
Part No. T-ST-TCLIP



9" x 17" x 3" Gooseneck Hook
 2 required for set
 Used with Challenger RG model
 Ground bearing model only
Part No. T-ST-STDGHOOK



12" x 12" x 3" Trailer Bed Hook
 2 required for set
 Used with Challenger RG model
 Ground bearing model only
Part No. T-ST-STDBHOOK

11" x 15" x 3" Trailer Bed Hook
 2 required for set
 Used with Challenger NGB model
 Non ground bearing model only
Part No. T-ST-NGBBHOOK



MISC. STEEL TRAILER PARTS



2" x 5" x 12.75" Solid Bar
Part No. T-ST-STIFFBLOCK1275

2.5" X 12" Tie rod cylinder 2500 PSI
 Used with No. T-ST-NECKSUPP
Part No. T-HY- 215114



MISC. STEEL TRAILER PARTS - NOT PICTURED

Replacement bar for stiff leg assembly
 51" x 1.50" cold rolled round bar
Part No. T-ST-15ROUND

#6 Bridge pin
Part No. T-H-6NPBROZ

12" x 1.5" cold rolled round bar
 Used with Challenger single 6" cylinder
 Ground bearing model only
Part No. T-ST-S6PIN

21" x 1.5" cold rolled round bar
 Used with Challenger twin 6" cylinder
 Ground bearing model only
Part No. T-ST-D6PIN

12' x 1.875" cold rolled round bar
 Used with Challenger single 8" cylinder
 Ground bearing model only
Part No. T-ST-S8PIN

21" x 1.875" cold rolled round bar
 Used with Challenger twin 8" cylinder
 Ground bearing model only
Part No. T-ST-D8PIN

11.75" x 11.75" x .5"
 Center plate for No. T-ST-STDBHOOK
Part No. T-ST-CNTRPLATE

10.75" x 14.75" x .5"
 Center plate for # TPIST-NGBBHOOK
Part No. T-ST-NGBCNTRPLATE

4.5" x 1" clevis pin
 Used with No. T-ST-SFTYBAR
 Challenger RG Ground bearing model only
Part No. T-ST-100N450PCLOZ